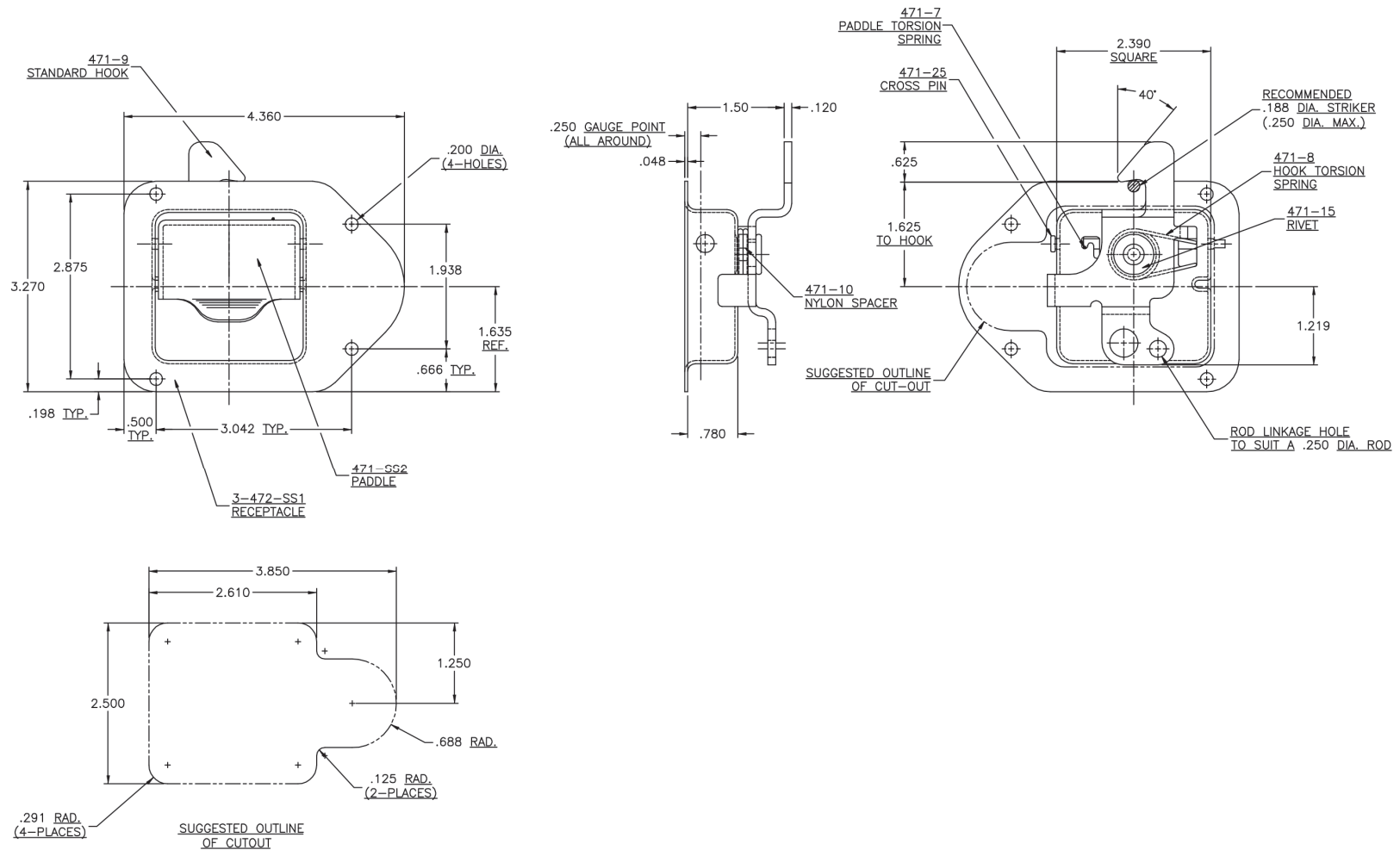


TECHNICAL DRAWING / DESSIN TECHNIQUE



JIMEXS
HARDWARE

1 866 447-5656 / INFO@JIMEXS.COM

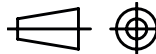
WWW.JIMEXS-HARDWARE.COM

225-791

Tool box lock
 Serrure à palette

2022-01-05

PROJECTIONS



DIMENSIONS

MATERIAL/MATÉRIEL

SPECIFICATIONS / SPÉCIFICATIONS

4,36" x 3,27"

Polished stainless steel (304)

Acier inoxydable poli (304)

Non-locking / Non-barrable

Rod guides (225-819) not included /

Guides de tiges (225-819) non-inclus