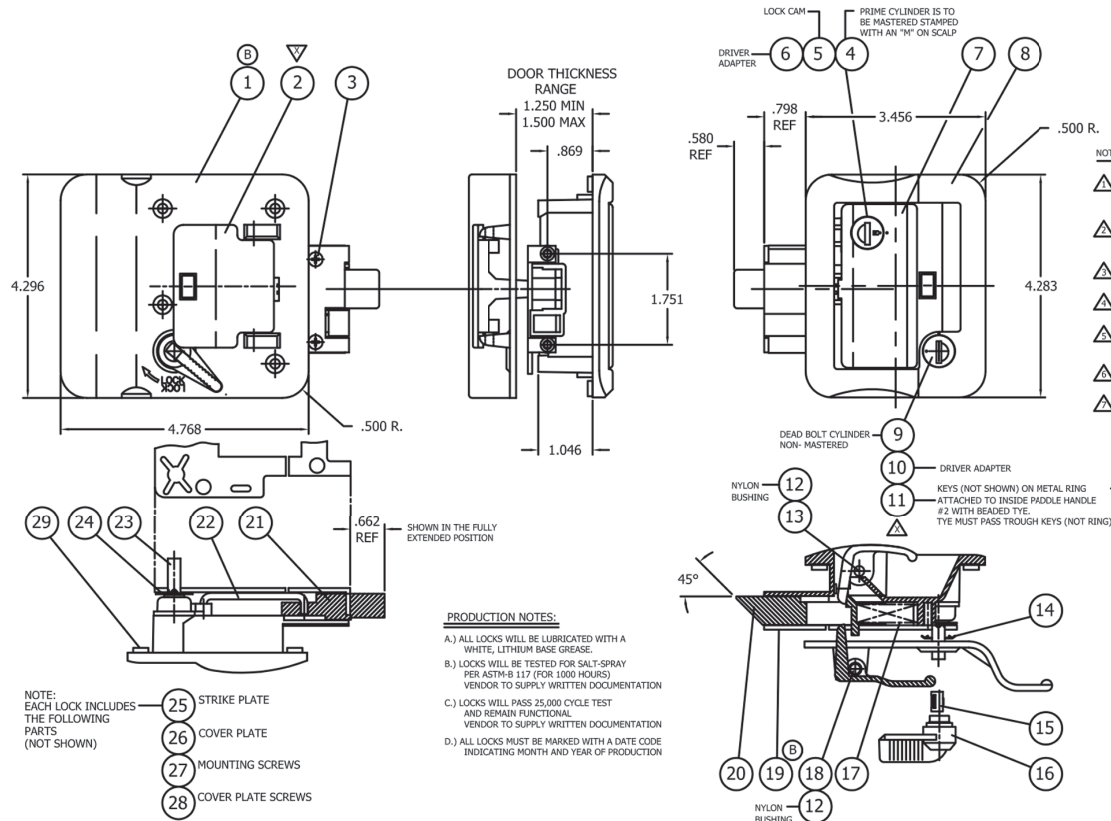


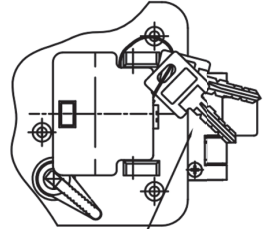
# TECHNICAL DRAWING / DESSIN TECHNIQUE



- NOTES: UNLESS OTHERWISE SPECIFIED:
- ▲ ALL ZINC DIE-CAST COMPONENTS ARE TO BE MADE FROM VIRGIN GRADE, SAE 903 ZINC ALLOY (ZAMAK 3)
  - ▲ ALL STEEL COMPONENTS ARE TO BE MADE FROM 1020/1018 ALLOY OR EQUIVALENT
  - ▲ EXTERIOR POWDER COATED FINISH TO BE 60-100 MILS
  - ▲ EXTERIOR CHROME FINISH IS: COPPER (.0003), NICKEL (.0012), CHROMIUM (.0001)
  - ▲ ALL PARTS MUST BE FREE OF BURRS OR FLASH WHICH MAY BE DETRIMENTAL TO SUITABLE ASSEMBLY, SAFE HANDLING OR FUNCTION.
  - ▲ ALL FASTENER PRODUCTS AND OR TAPPED HOLES MUST BE UNIFIED SCREW THREADS
  - ▲ APPLIED GASKET MATERIAL—CLOSED CELL E.P.D.M. FOAM DENSITY 17/20 LB. ADHESIVE ON ONE SIDE. THICKNESS=.118 (3mm)

- PRODUCTION NOTES:
- A.) ALL LOCKS WILL BE LUBRICATED WITH A WHITE, LITHIUM BASE GREASE.
  - B.) LOCKS WILL BE TESTED FOR SALT-SPRAY PER ASTM-B 117 (FOR 1000 HOURS) VENDOR TO SUPPLY WRITTEN DOCUMENTATION
  - C.) LOCKS WILL PASS 25,000 CYCLE TEST AND REMAIN FUNCTIONAL VENDOR TO SUPPLY WRITTEN DOCUMENTATION
  - D.) ALL LOCKS MUST BE MARKED WITH A DATE CODE INDICATING MONTH AND YEAR OF PRODUCTION

- NOTE: EACH LOCK INCLUDES THE FOLLOWING PARTS (NOT SHOWN)
- 25 STRIKE PLATE
  - 26 COVER PLATE
  - 27 MOUNTING SCREWS
  - 28 COVER PLATE SCREWS



IMPORTANT NOTE: THIS DRAWING IS MADE FROM UNASSEMBLED AND UNFINISHED PARTS SUPPLIED BY VENDOR. TO BE USED FOR REFERENCE & WAREHOUSE IDENTIFICATION

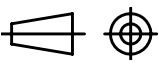
QTY	DESCRIPTION	MATERIAL	REF.	DESCRIPTION
1	GASKET	SPDM	REF: NOTE-7	
2	FLAT HD M.S.	STD/H/T	#8-3x.375 PPHMSZ	
4	FLAT HD M.S.	STD/H/T	#8-3x.750 PPHMSZ	
1	COVER PLATE	STEEL	ZINC PLATED	
1	STRIKE PLATE	STEEL	ZINC PLATED	
1	WAVE WASHER	STEEL	BLACK NIOS (TEMPERED)	
1	DEADBOLT STEM	ZDC-3		
1	LINK ARM	STEEL	NICKEL PLATED	
1	PLUNGER (DEADBOLT)	ZDC-3		
1	PLUNGER (PADDLE)	ZDC-3		
1	AXLE	STEEL	NICKEL PLATED	
1	SPRING	STEEL	NICKEL PLATED	
1	KNOB	ABS	MOLDED (RED)	
1	BUSHING (KNOB)	STEEL	BLACK NIOS (TEMPERED)	
1	TOOTHED WASHER	STEEL	BLACK NIOS (TEMPERED)	
2	AXLE	STEEL	NICKEL PLATED	
4	BUSHING	NYLON	MOLDED (WHITE)	
2	KEY	BRASS	NICKEL PLATED	
1	DRIVER ADAPTER	ZDC-3		
1	CYLINDER (DEADBOLT)	PURCH	EURO LOCK	
1	BODY	ZDC-3		
1	EXTERIOR PADDLE	ZDC-3		
1	DRIVER ADAPTER	ZDC-3		
1	LOCK CAM	ZDC-3		
1	CYLINDER (PRIME)	PURCH	EURO LOCK	
4	FLAT HD M.S.	STD	#8-3x.300 PPHMSZ	
1	INSIDE PADDLE	ZDC-3		
1	INSIDE WAVY PLATE	ZDC-3	OPTIONAL MATL.=STEEL	



1 866 447-5656 / INFO@JIMEXS.COM  
WWW.JIMEXS-HARDWARE.COM

225-855  
Paddle handle  
Serrure à palette

2022-01-05  
PROJECTIONS



DIMENSIONS  
COLOR / COULEUR  
SPECIFICATIONS / SPÉCIFICATIONS

3.47" x 4.28"  
White / Blanc  
Locking / Verrouillable