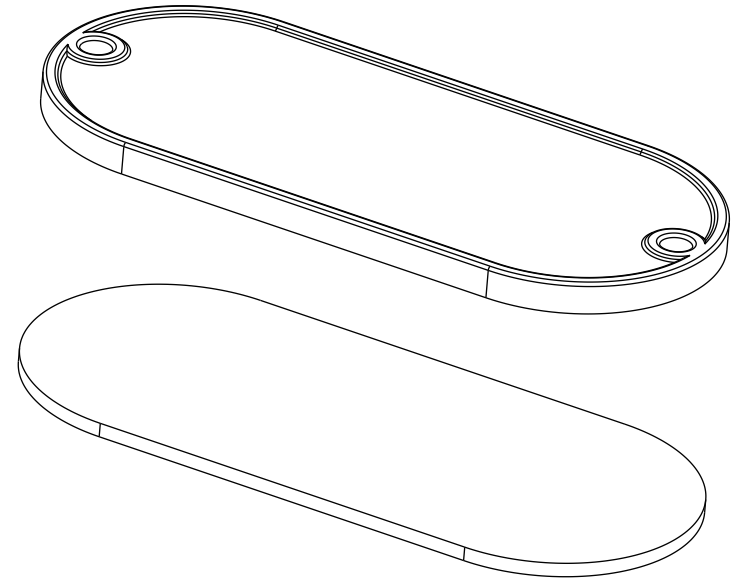
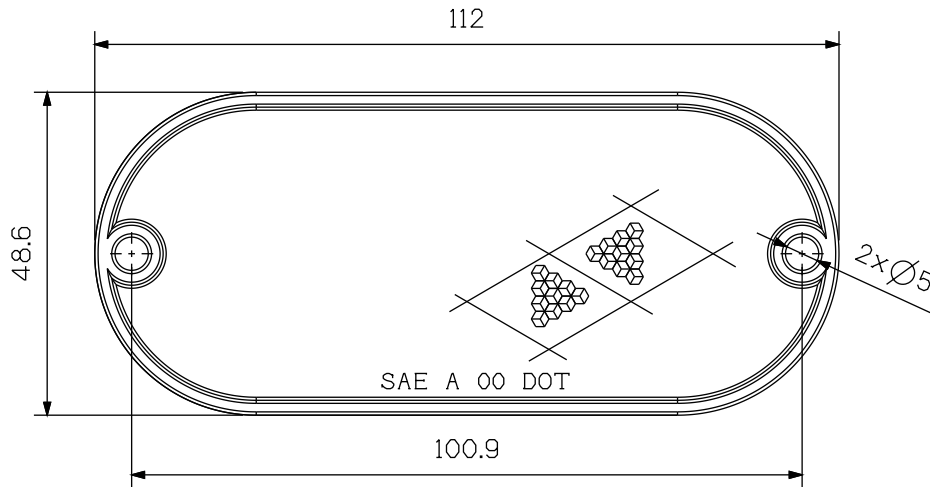
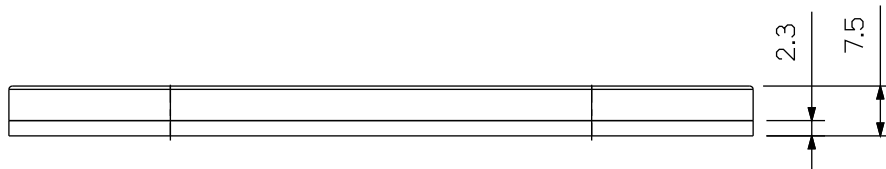


TECHNICAL DRAWING / DESSIN TECHNIQUE



ISOMETRIC VIEW



BOTTOM VIEW

JIMEXS
HARDWARE

1 866 447-5656 / INFO@JIMEXS.COM

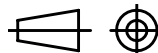
WWW.JIMEXS-HARDWARE.COM

703-733

Réflecteur Ambre
Amber Reflector

2022-02-14

PROJECTIONS



DIMENSIONS
SPECS

1-7/8" x 4-5/16"

Avec adhésif et trous pour montage /
With adhesive and mounting holes