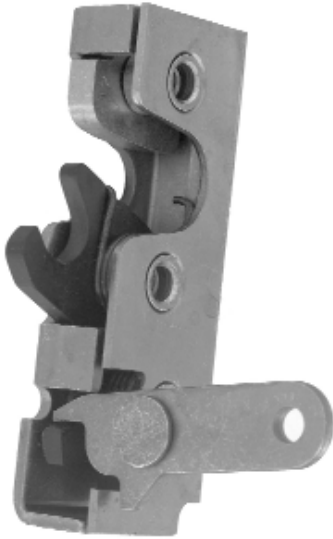


# 050-0200 Slimline Rotary Latch



## **DESIGNED FOR:**

- Thinner, light or medium weight door applications
- Door weights up to 75 lbs. (34 kg)
- Door seal pressures of 20-25 lbs. (9-11kg) recommended for best results (not to exceed 50 lbs. [23 kg])
- Visible surface installation or concealed installation



500 Bailey Avenue  
P.O. Box 350  
New Hampton, Iowa 50659  
United States  
Tel: 641-394-3188  
Fax: 641-394-2392  
1-800-447-0343  
www.trimarkcorp.com



**TriMark Europe, Ltd.**  
Cedar Court  
Walker Road  
Bardon Hill  
Coalville LE67 1TU  
United Kingdom  
Tel: +44 (0)1530 512460  
Fax: +44 (0)1530 512461  
www.trimarkeu.com



# 050-0200 Slimline Rotary Latch

## USE WITH:

- Please refer to our website for related products that are compatible for use with this product

## AVAILABLE:

- Left or right hand configurations (left hand shown)
- With standard .265 diameter "thru" axles as shown or 1/4-20 UNC threaded axles (optional) or M6 x 1.0 threaded axles

## FINISH:

- Zinc plated, clear chromate steel components
- Stainless steel

## MATERIAL:

- Internal latch components: heat treated, smooth edge stamped steel
- Springs: non-corrosive stainless steel
- Case halves: high strength steel

## INSTALLATION:

- Three 1/4-20 UNC grade 5-type or M6 x 1 class 8.8 or better fasteners are recommended
- Vertical mounting with support ramp at top is required for proper alignment and subsequent engagement of locking pawl and striker bolt
- Tighten to the fastener manufacturers' recommended torque value, however, do not exceed 120 in-lbs. (13.3 N-m)

## INTERNAL LUBRICATION:

- Oven-cured dry lubricant is applied on all critical moving parts

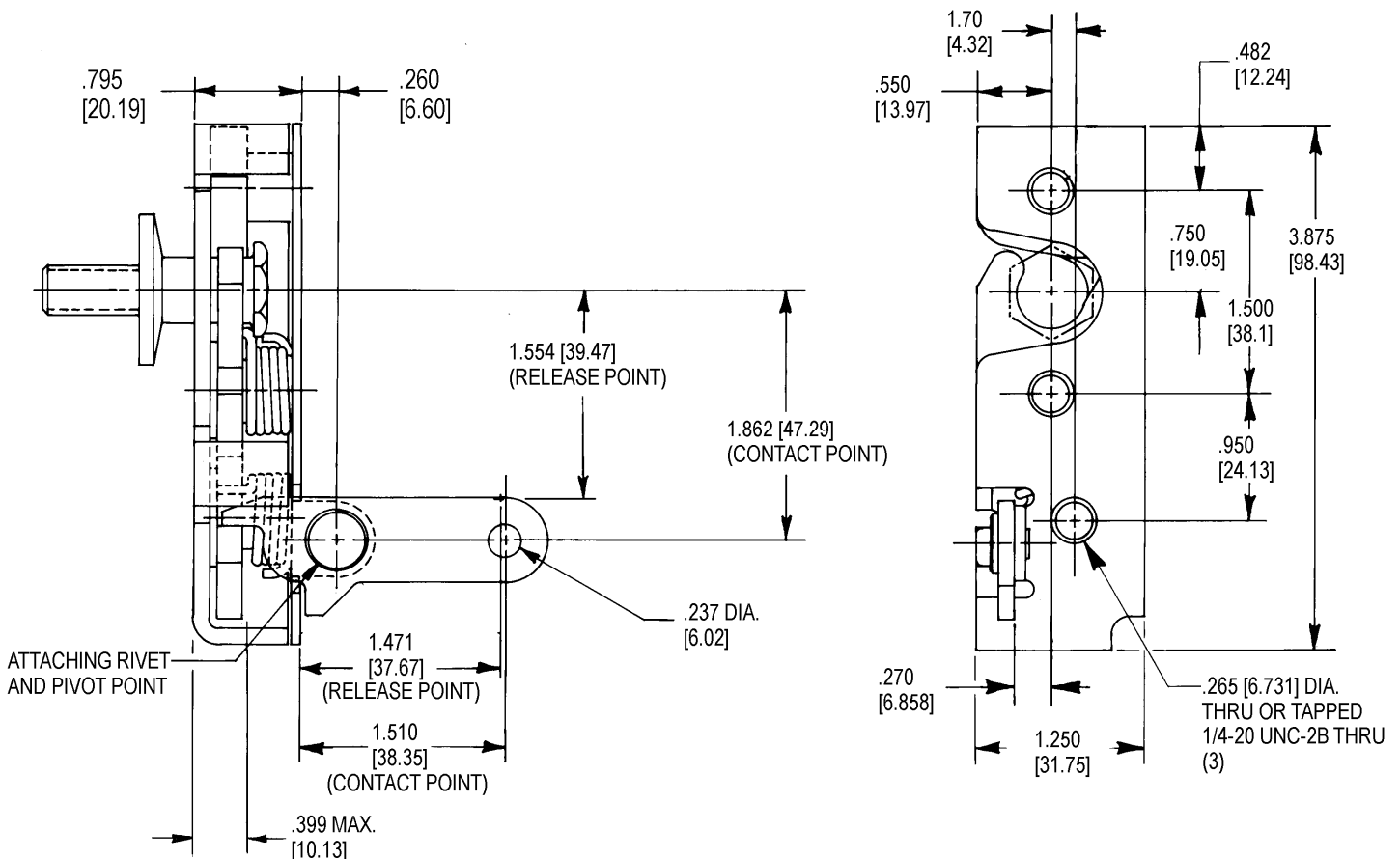
U.S. Patent No. 7,156,430

U.S. Patent No. 7,320,488

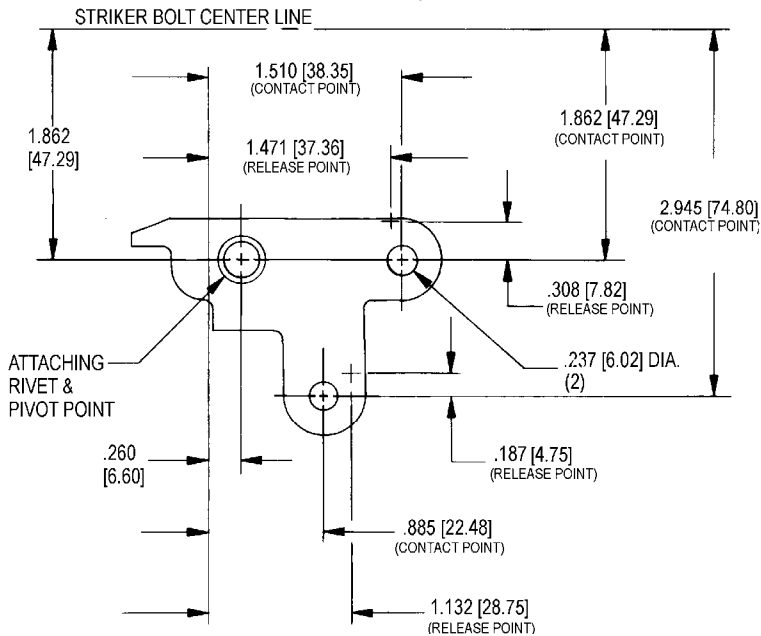
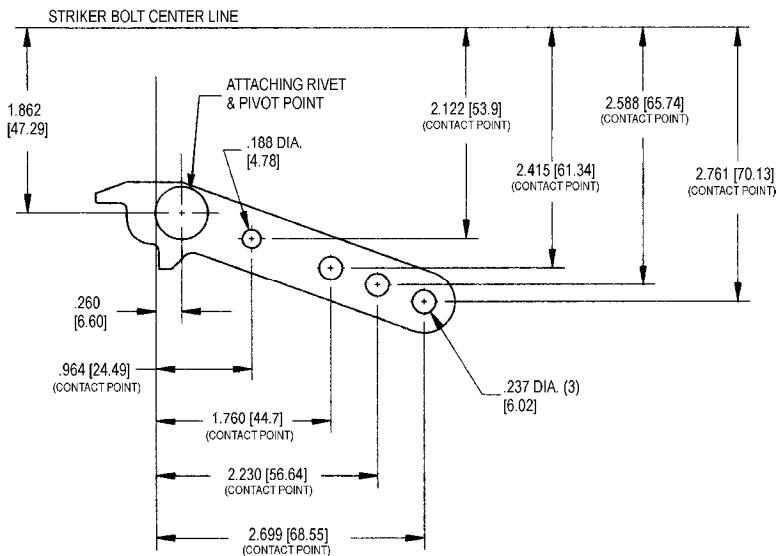
Two position rotor latches comply with FMVSS 206 in primary and secondary latching positions when tested with approved TriMark striker bolts in accordance with SAE J839.

Individual part dimensions are for reference only. Refer to individual part drawings for complete dimensions, specifications, and installation procedures. Engineering assistance and application drawings are available.

For more information visit  
[www.trimarkcorp.com](http://www.trimarkcorp.com)



## Optional Trip Levers (In Reference to Striker Bolt Centerline)



## Optional Push-Button Release Configuration

